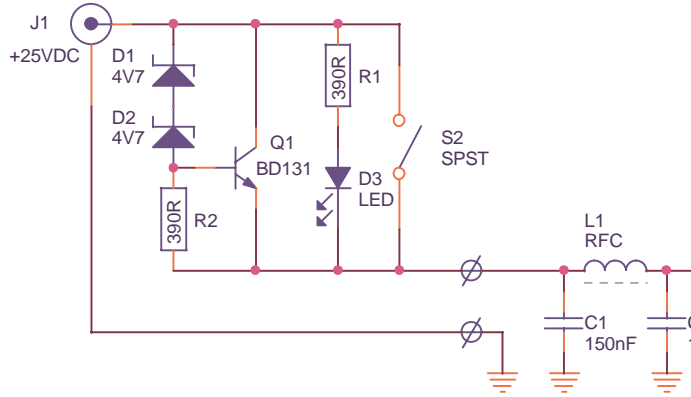


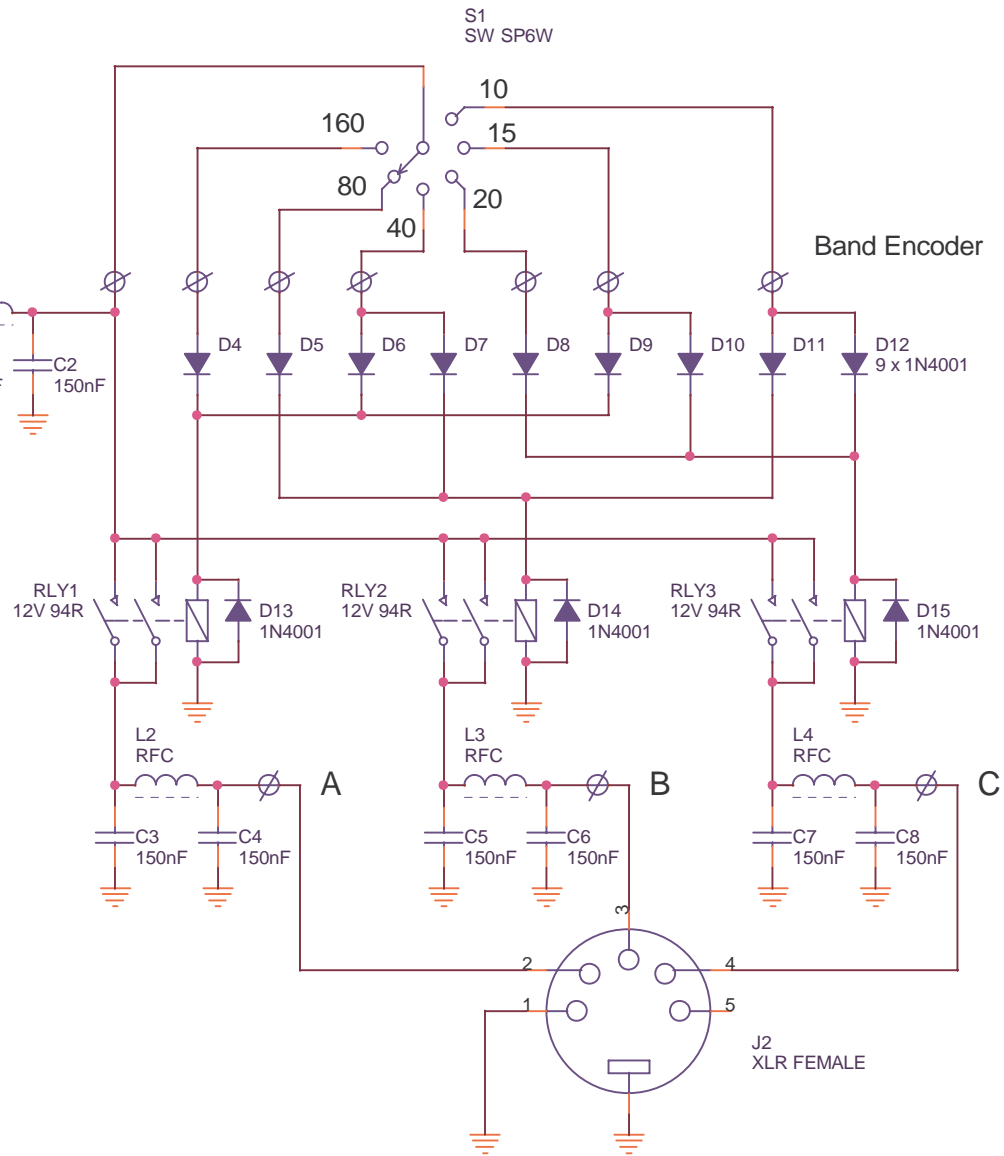
LNA (voltage-controlled) switch



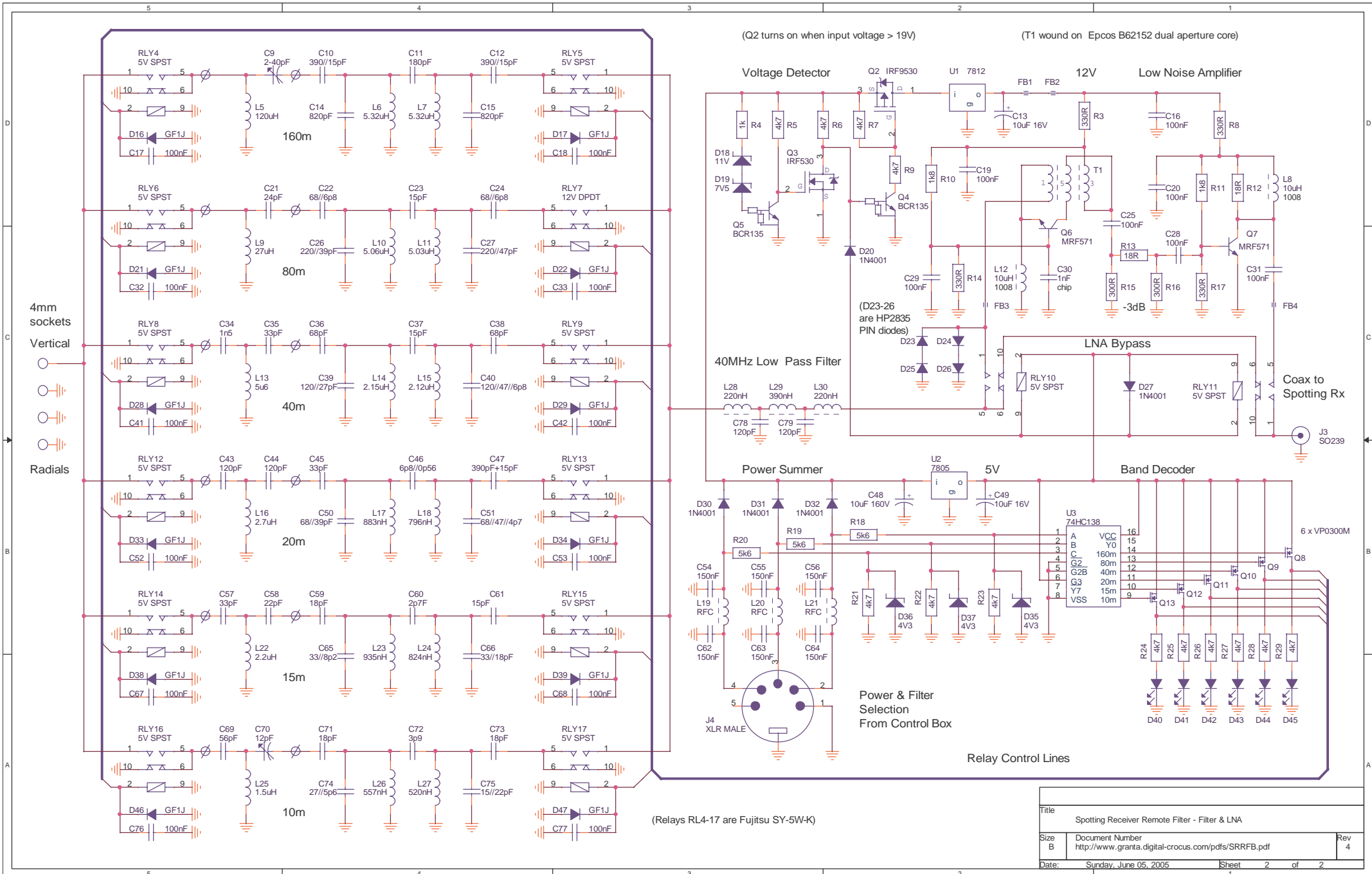
LNA on when S2 closed, line supply = 24V
 LNA off when S2 open, line supply = 14V

Filter select encoding

Band	A	B	C
160	1	0	0
80	0	1	0
40	1	1	0
20	0	0	1
15	1	0	1
10	0	1	1



Title		
Spotting Receiver Remote Filter - Control Box		
Size	Document Number	Rev
A	http://www.granta.digital-crocus.com/pdfs/SRRFB.pdf	4
Date:	Sunday, June 05, 2005	Sheet 1 of 2



(Relays RL4-17 are Fujitsu SY-5W-K)

Title		Spotting Receiver Remote Filter - Filter & LNA	
Size	B	Document Number	http://www.granta.digital-crocus.com/pdfs/SRRFB.pdf
Date:	Sunday, June 05, 2005	Sheet	2 of 2
			Rev 4